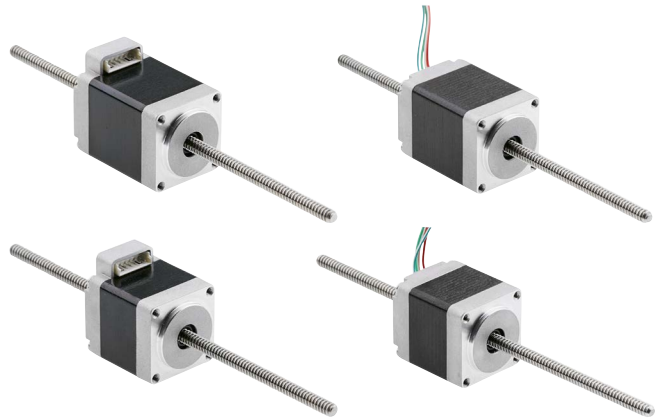


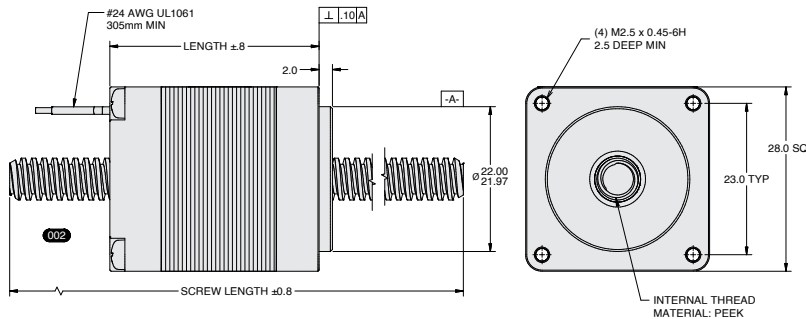
The **APES11M** is a 28mm / NEMA 11 frame, hybrid stepper-based actuator. The APES11M is available in standard or custom designs as a linear actuator (non-captive), leadscrew motor (external linear), or guided linear actuator (captive). A variety of resolutions are offered, ranging from 0.006 to 0.016 mm per step, with an output force of up to 190 N (43 lbs.) ElectroCraft's unique motor, shaft and insert designs offer industry-leading output force per frame size while providing superior precision, speed and efficiency.



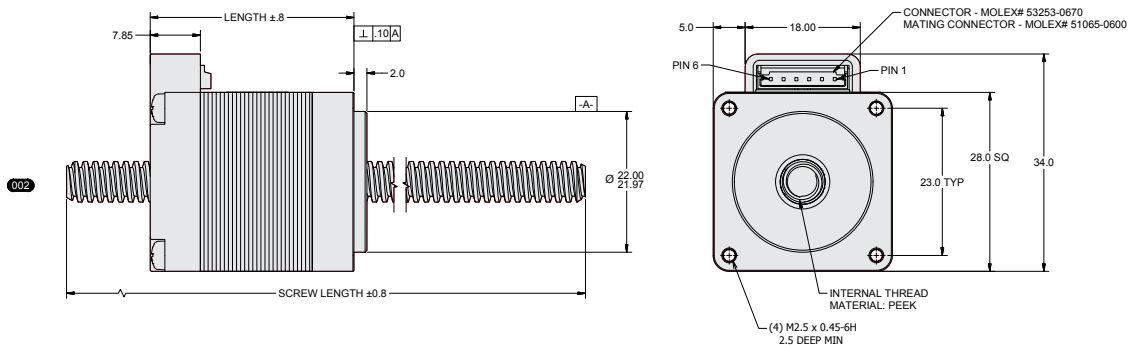
APES11M STEPPER LINEAR ACTUATOR	
Size	NEMA 11, 1.8°
Force	71 N (16 lbs.) to 190 N (43 lbs.)

Bipolar Model	Max Length (mm)	Max Length (in)
APES11M-8A	31.9 ±.03	1.26 ±0.8
APES11M-11A	39.6 ±.03	1.55 0.8

**With flying leads**



**With integral connector**



# APES11M

## ElectroCraft AxialPower™ Enhanced

### STEPPER LINEAR ACTUATOR



### APES11M Model Number Example

Model Number	Length (in)	Length (mm)	Weight (g)	Rotor Inertia (g-cm <sup>2</sup> )
APES11M-8A	1.26	31.9	113	8.69
APES11M-11A	1.56	39.6	142	12.36

Thread Description		Lead (in)	Lead (mm)	Travel/Step (in)	Travel/Step (mm)	Max Force APES11M-8 (lbs)	Max Force APES11M-8 (N)	Max Force APES11M-11 (lbs)	Max Force APES11M-11 (N)
<b>D</b>	3/16-20 (1S)	0.050	1.270	0.000250	0.006350	32.5	145	42.7	190
<b>L</b>	3/16-24 (3S)	0.125	3.175	0.000630	0.016000	16	71	20	89

APES 11M - 11 A 05 - 0 D B X 0 - X

Actuator Type	
0	Linear Actuator
1	Leadscrew Motor

Lead Termination	
0	Flying Leads
1	Leads w/Connector
2	Integral Connector

Feedback	
X	No Encoder

Windings	Rated Voltage (VDC)	Rated Current (A)	Phase Resistance (Ohm)	Phase Inductance (mH)
<b>8A05</b>	4.79	0.50	9.58	7.67
<b>8A10</b>	2.56	1.00	2.56	1.85
<b>8A15</b>	1.62	1.50	1.08	0.77
<b>11A05</b>	5.87	0.50	11.74	8.08
<b>11A10</b>	3.11	1.00	3.11	2.08
<b>11A15</b>	2.01	1.50	1.34	0.85

Leadscrew End Features	
X	No End Feature
1	6-32 UNC x 12.7mm
2	M2.5 x 0.45 x 12.7mm
3	∅.098/∅.097 x 12.7mm

Screw Length	
X	No Leadscrew
A	76.2mm (3 inches)
B	152.4mm (6 inches)
C	304.8mm (12 inches)



Your Genius. Our Drive.

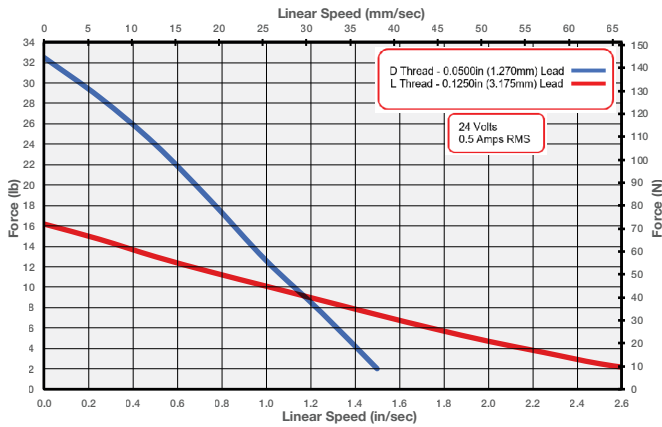
ElectroCraft, Inc.  
250 McCormick Road,  
Gallipolis, Ohio 45631

Tel: (844) 338-8114  
Fax: (812) 385-3013

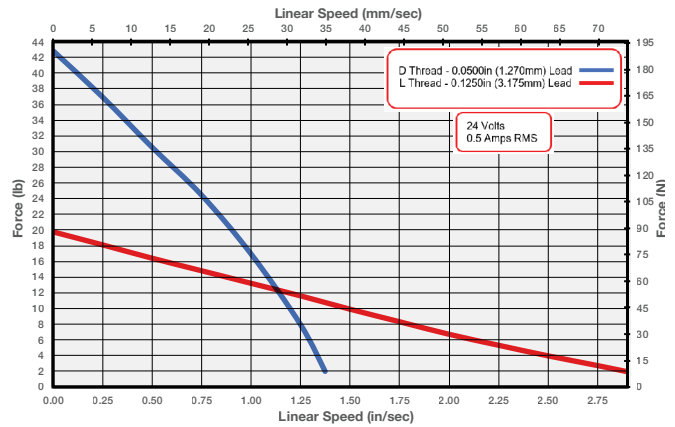
Email: sales@electrocraft.com  
www.electrocraft.com

# APES11M Performance Curves

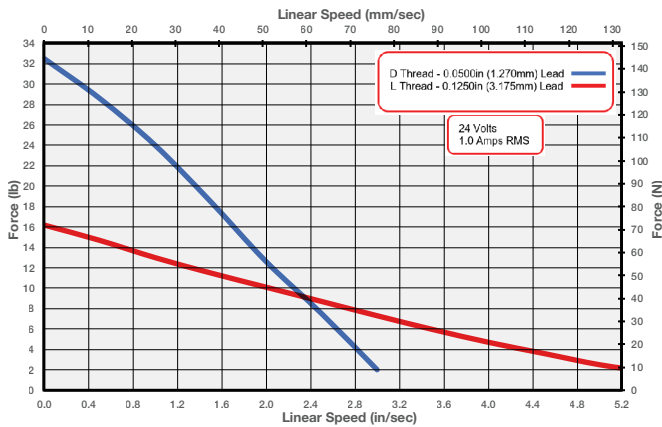
**APES11M-8A05**



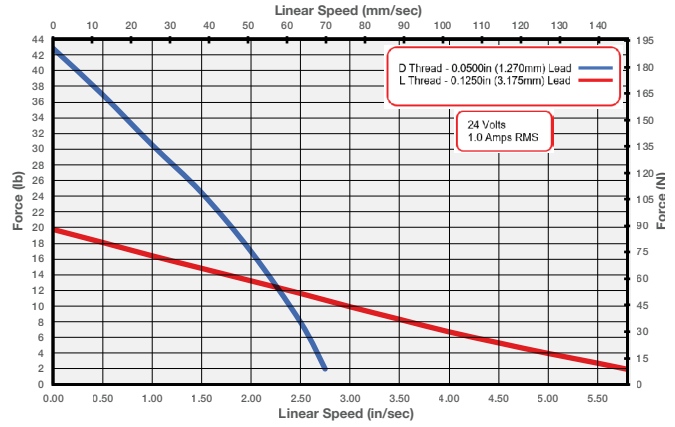
**APES11M-11A05**



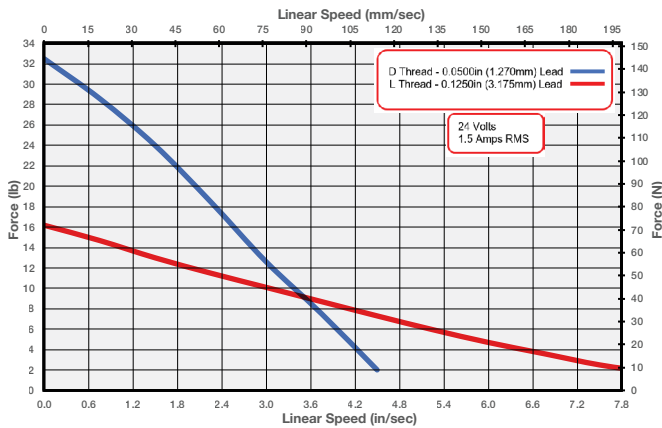
**APES11M-8A10**



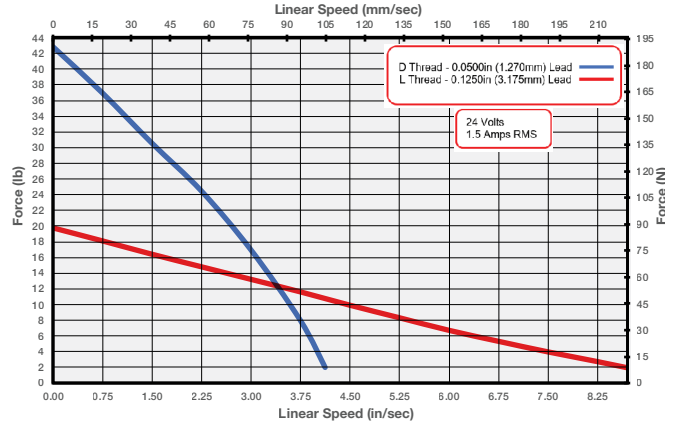
**APES11M-11A10**



**APES11M-8A15**



**APES11M-11A15**



Your Genius. Our Drive.

ElectroCraft, Inc.  
250 McCormick Road,  
Gallipolis, Ohio 45631

Tel: (844) 338-8114  
Fax: (812) 385-3013

Email: sales@electrocrafter.com  
www.electrocrafter.com