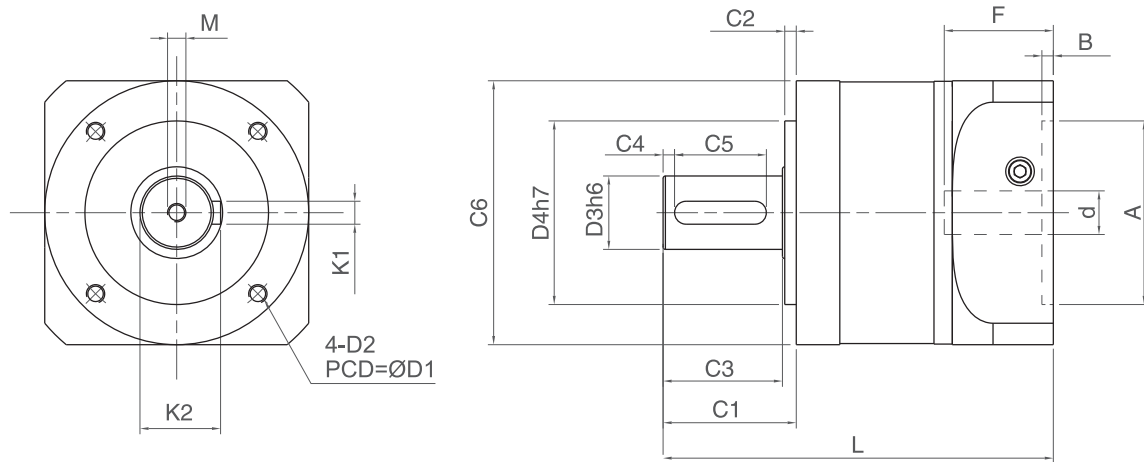


ALL-PURPOSE, THREAD HOLE

DLseries

PHT VERTEX PRECISION COMPONENTS CORP.



Unit: mm

Info.	DL060	DL090	DL120	DL150
D1	50.0	70.0	100.0	145.0
D2	M5	M6	M8	M12
D3	16 (12~16)	20 (18~22)	32 (24~32)	42 (38~42)
D4	40.0	60.0	80.0	130.0
C1	31.0	55.0	58.0	74.0
C2	3.00	5.00	5.00	4.00
C3	27.0	49.0	52.0	67.0
C4	3.00	5.00	5.00	5.00
C5	20.0	25.0	40.0	45.0
C6	60.0	93.0	115.0	160.0
L	L1	118.0	172.5	170.3
	L2	137.0	198.5	198.6
M	M4 x P0.7 x 15	M6 x P1.0 x 20	M8 x P1.25 x 27	M12 x P1.75 x 32
K1	5.00	6.00	10.0	12.0
K2	18.0	22.5	35.1	45.0
d	≦ 14.0	≦ 24.0	≦ 28.0	≦ 42.0
A	30~50	50~80	55~110	95~130
B	6.00	8.00	5.00	10.0
F	≦ 32.0	≦ 40.0	≦ 47.5	≦ 66.5

Information	Stage	Ratio	DL060	DL090	DL120	DL150	
Defined Output Torque (Nm)	1	3	40	140	260	476	
		4	51	168	306	560	
		5	47	155	292	536	
		7	44	166	285	520	
		10	40	140	260	476	
	2	9	40	140	260	476	
		12	40	140	260	476	
		15	40	140	260	476	
		16	51	168	306	560	
		20	47	155	292	536	
		21	40	140	260	476	
		25	47	155	292	536	
		28	44	166	285	520	
		30	40	140	260	476	
		35	44	166	285	520	
		40	40	140	260	476	
		50	40	140	260	476	
		70	40	140	260	476	
	3	100	47	155	292	536	
Peak Output Torque (Nm)	1, 2, 3	3~100	3 times of Defined Output Torque				
Backlash (arc min)	1	3~10	≤ 10	≤ 10	≤ 10	≤ 10	
	2	9~70	≤ 12	≤ 12	≤ 12	≤ 12	
Defined Input Speed (RPM)	1	3, 4, 5	3300	2600	2300	2200	
		7, 10	4000	2900	2700	2700	
	2	9~40	4400	3200	3000	3000	
		50	4800	3600	3300	3200	
		70	5500	4200	3900	3500	
Weight (kg)	1	3~10	1.10	3.50	6.00	16.0	
	2	9~70	1.60	4.50	7.20	20.0	
Torsional Rigidity (Nm/arc min)	1, 2	3~70	7.00	11.00	27.00	48.0	
Allowable Radial Force (N)			750	5400	7500	14000	
Allowable Axial Force (N)			545	4500	6450	12000	
Noise (dB)			65	64	64	64	
Life Time (hrs)			20000				
Temperature (°C)			-15°C~+90°C				
Protection Rank			IP64				
Lubricant			Synthetic Lubricant, ISO VG220				
Mass Moments of Inertia (kg X cm²)	1	3	0.31	0.40	5.90	10.50	
		4	0.30	0.60	5.09	9.10	
		5	0.29	0.59	4.93	8.85	
		7	0.28	0.58	4.83	8.85	
		10	0.27	0.57	4.81	8.46	
	2	9	0.29	0.56	4.91	9.02	
		12	0.30	0.58	5.10	9.01	
		16	0.30	0.60	5.09	9.01	
		20	0.30	0.60	5.07	9.02	
		25	0.29	0.59	4.91	8.83	
		28	0.30	0.59	5.07	9.01	
		35	0.30	0.58	4.91	8.82	
		40	0.27	0.56	4.80	8.45	
		50	0.27	0.56	4.80	8.45	
		70	0.27	0.56	4.80	8.45	
		3	100	0.27	0.56	4.80	8.45