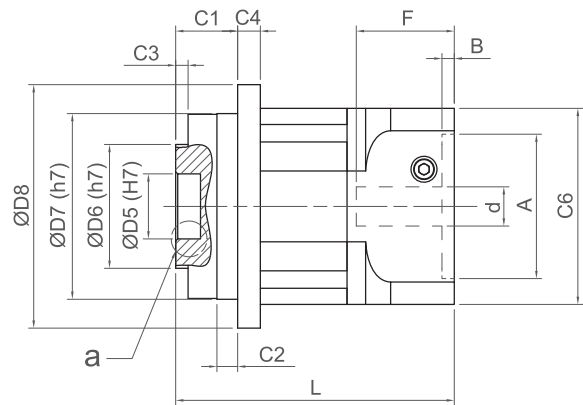
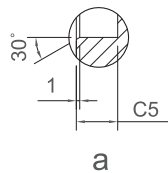
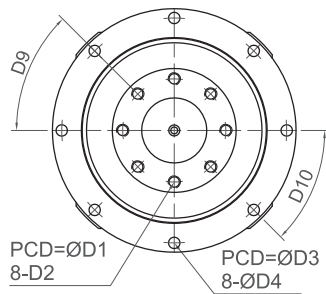


FLANGE ROTATING

DF series

PHT VERTEX PRECISION COMPONENTS CORP.



Unit: mm

Info.	DF060	DF090	DF120	DF150	
D1	31.5	50.0	63.0	80.0	
D2	8 x M5 x P0.8	8 x M6 x P1.0	12 x M6 x P1.0	12 x M8 x P1.25	
D3	79.0	109.0	135.0	168.0	
D4	8 x 4.5	8 x 5.5	8 x 5.5	12 x 6.6	
D5	20.0	31.5	40.0	50.0	
D6	40.0	60.0	80.0	95.0	
D7	64.0	90.0	110.0	140.0	
D8	86.0	118.0	145.0	179.0	
D9	45°	45°	45°	30°	
D10	45°	45°	30°	30°	
C1	20.5	30.0	29.0	38.0	
C2	16.5	10.0	10.0	15.0	
C3	4.0	6.0	6.0	6.0	
C4	15.5	11.0	17.4	25.0	
C5	8.0	12.0	12.0	12.0	
C6	60.0	94.0	114.0	142.0	
d	≦ 14.0	≦ 24.0	≦ 28.0	≦ 42.0	
A	30~50	50~80	55~100	95~130	
B	6.0	6.0	5.0	10.0	
F	≦ 35.0	≦ 47.5	≦ 47.5	≦ 66.5	
L	L1	111.7	135.0	140.3	233.0
	L2	134.0	163.3	168.6	284.8

Information	Stage	Ratio	DF060	DF090	DF120	DF150	
Defined Output Torque (Nm)	1	3	44	168	260	476	
		4	54	188	306	560	
		5	46	176	285	520	
		7	48	180	292	536	
		10	44	168	260	476	
	2	9	44	168	260	476	
		12	44	168	260	476	
		15	44	168	260	476	
		16	54	188	306	560	
		20	46	176	285	520	
		21	44	168	260	476	
		25	46	176	285	520	
		28	48	180	292	536	
		30	44	168	260	476	
		35	48	180	292	536	
		40	44	168	260	476	
		50	44	168	260	476	
		70	44	168	260	476	
	3	100	46	176	285	520	
Peak Output Torque (Nm)	1, 2, 3	3~100	3 times of Defined Output Torque				
Backlash (arc min)	1	3~10	≤ 5	≤ 5	≤ 5	≤ 5	
	2	9~70	≤ 8	≤ 8	≤ 8	≤ 8	
Defined Input Speed (RPM)	1	3, 4, 5	3300	2600	2300	2200	
		7, 10	4000	2900	2700	2700	
	2	9~40	4400	3200	3000	3000	
		50, 70	4800, 5500	3600, 4200	3300, 3900	3200, 3500	
Weight (kg)	1	3~10	2.30	4.70	7.40	22.0	
	2	9~70	2.80	5.80	8.90	29.0	
Torsional Rigidity (Nm/arc min)	1, 2	3~70	6.50	14.00	27.00	48.0	
Max. Bending Moment (Nm)			50	98	125	200	
Allowable Axial Force (N)			2300	5400	6700	9000	
Noise (dB)			65	65	64	64	
Life Time (hrs)			20000				
Temperature (°C)			-15°C~+90°C				
Protection Rank			IP64				
Lubricant	Synthetic Lubricant, ISO VG220						
Mass Moments of Inertia (kg X cm²)	1	3	0.04	0.78	2.38	19.80	
		4	0.03	0.60	2.00	17.00	
		5	0.03	0.59	2.00	17.00	
		7	0.03	0.73	2.00	16.80	
		10	0.04	0.75	2.30	19.00	
	2	9	0.04	0.78	2.38	19.80	
		12	0.03	0.73	2.10	17.00	
		16	0.03	0.60	2.10	17.00	
		20	0.03	0.60	2.10	16.80	
		25	0.03	0.75	2.10	17.00	
		28	0.03	0.75	2.10	19.00	
		35	0.03	0.73	2.38	19.00	
		40	0.04	0.78	2.38	19.00	
		50	0.04	0.78	2.38	19.00	
		70	0.04	0.78	2.38	19.00	
		3	100	0.04	0.78	2.38	19.80